

# KLUDI FLEXX.BOXX

*One concealed box  
for all applications*



● KLUDI ●

# KLUDI FLEXX.BOXX – Maximum *flexxibility*



**KLUDI FLEXX.BOXX** – the name says it all, now more than ever. The new FLEXX.BOXX comes as an concealed box with integrated flushing set. The unit is now supplied fully assembled with the trim set of your choice.

Now you can install the FLEXX.BOXX with even greater flexibility, as all you need is one box for all applications: thermostat, single lever mixer or protection against backflow. This means you can wait until the last minute to choose the appropriate KLUDI tap.

The FLEXX.BOXX combines new benefits with top KLUDI quality and tried and tested features, such as the flexible Elastomere coating. It is ideal for modern concealed installation – space-saving in small shower cubicles and bathrooms, modern and easy to clean.

A concealed box for all applications – this is what our partners wanted from the FLEXX.BOXX and that is why we have optimised its features, giving the KLUDI FLEXX.BOXX maximum flexxibility.



# Maximum *flushing comfort*

The KLUDI FLEXX.BOX is fully watertight and ready to install. The plumbing and the connection to the box can be tested for watertightness as soon as it has been installed.

The new FLEXX.BOX contains an integrated flushing set for the convenient flushing of internal plumbing. The flushing pipes are fastened with four screw caps, which are easy to undo. You can use a conventional hose to create any flushing combination you like – easy and convenient.



A major advantage: the box does not need to be opened to test for watertightness and flushing in accordance with DIN 1988 and there is no need for any preliminary assembly work.



As soon as you take off the cover for the final installation you can see the flushing set, consisting of four pipes and the glass fibre-reinforced plastic plate. The high quality material, developed for automobile construction, has proved its stability in extensive tests at temperatures ranging from +90 °C to -18 °C. During the watertightness test the pressure can therefore be left at a maximum of 16 bar throughout the whole plumbing system.

Once the Elastomere coating has been shortened you can remove the assembly pipe from the box, loosen the four stainless steel screws and simply pull the flushing set up and out. The screws can then be used to fasten the unit in place. The flushing set is reusable.



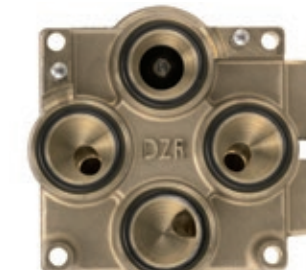
# Maximum *structural protection*



During the entire construction phase the cover stays on the KLUDI FLEXX.BOX. This means that no dirt can get into the unit and the seal faces inside are protected from damage. The original KLUDI seal is a visible sign of this construction protection.

All four flushing pipes have seals that, as with all water-bearing components, are KTW/W270 approved. The platform that is later assimilated into the unit has a precision-engineered seal face. This is made of dezincification-resistant (DZR) brass and has external DN 20 connections that are tested by KLUDI for watertightness.

As a concealed box the FLEXX.BOX has similar properties to a tap. In other words, it can be subjected to water pressure for many months following installation: a requirement that has to be complied with, particularly in the case of larger construction projects.



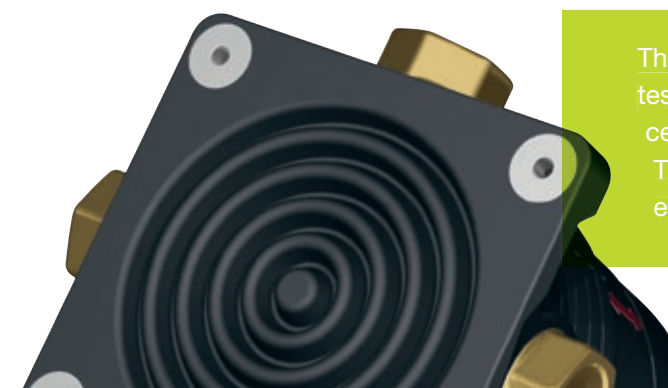
# Maximum *watertightness*

The watertight Elastomere coating acts as an intelligent sealing system that surrounds the water-bearing parts. Any condensation that arises inside the FLEXX.BOX is drained out onto the front of the tiles. Included with the unit is a seal that provides long term protection against leakage.



# Maximum *adjustability*

The flexible Elastomere coating is one of the tried and tested features of the FLEXX.BOX. The ring-shaped central folds allow it to fit effortlessly onto any wall. This makes both concealed and out-wall installation easier on uneven surfaces.



# Maxximum *compatibility*

Universal attachments mean that the KLUDI FLEXX.BOX can be fixed as classic concealed installation or as out-wall or front-wall installation. It can also be installed in prefabricated houses or wet rooms.

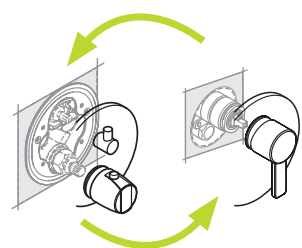
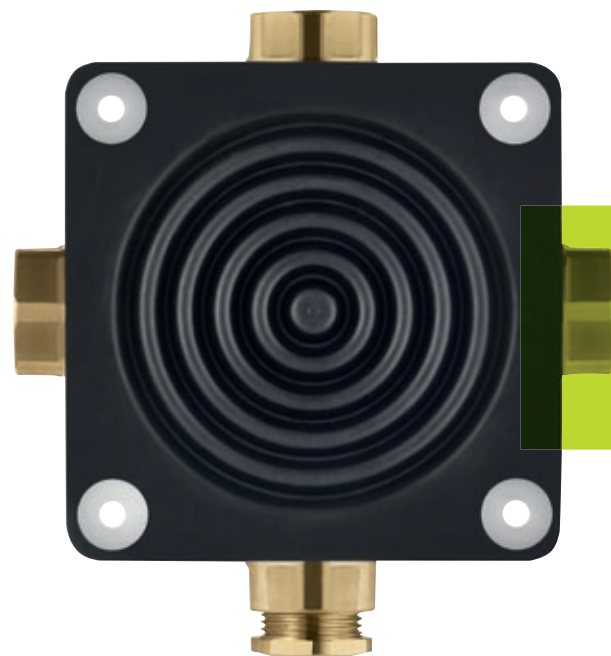
The FLEXX.BOX is also compatible with all conventional and flexible plumbing systems. The external connections leave enough space for the plumbing connections to be easily grouted.

All connections are set up for DN 20, which means that high rates of flow can be achieved. The large connection sizes mean that in the shower, in particular, many combinations of head, hand and side shower units are possible.



# Maxximum *sound insulation*

None of the water-bearing components have any direct contact with the wall. They are totally enclosed by the Elastomere coating, which absorbs the sound of running water before it can reach the wall.



It is possible to convert from a single lever mixer to a thermostat or vice versa at any time.

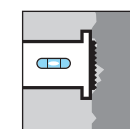
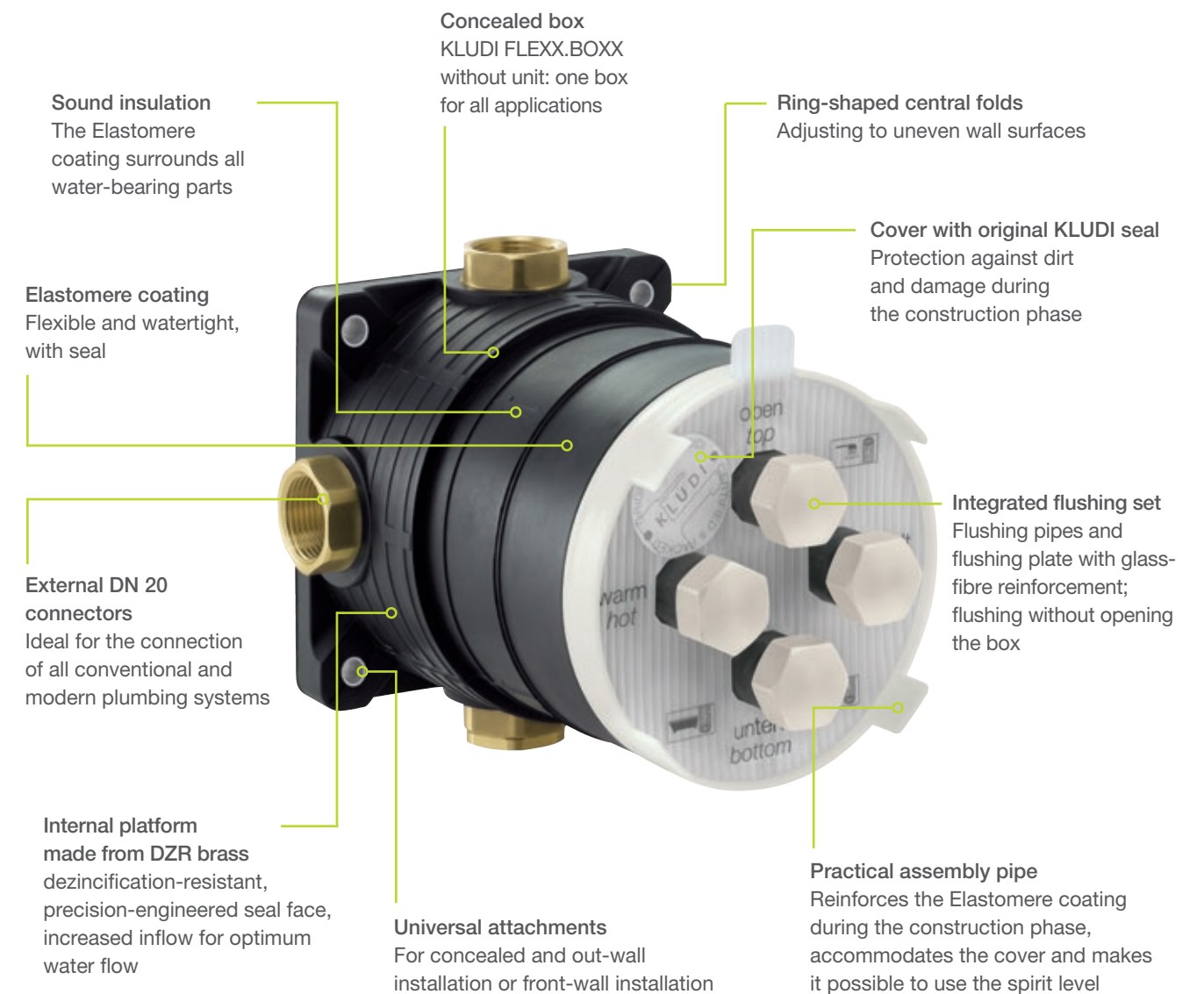
# Maxximum *convertibility*

The flexible benefits of the KLUDI FLEXX.BOX include the possibility of exchanging both the unit and the trim set at any time – even after installation – without any dirt or elaborate structural work.

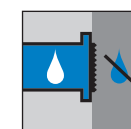


# Tried and tested quality – *new benefits*

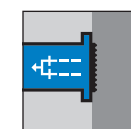
## ALL INFORMATION AT A GLANCE:



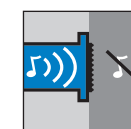
**Flexible wall installation**  
Installation on uneven surfaces possible



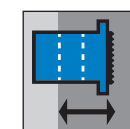
**Intelligent seal system**  
Protection from condensation and splashwater



**Single unit**  
Elastomere coating and water-bearing parts form a single unit



**Sound insulation**  
The noise of flowing water is not carried through the wall



**Installation depth**  
Arrows marked on the Elastomere coating show the optimum installation depth of 80 to 110 mm

Tried and tested expertise  
KLUDI FLEXX.BOX complies with Norms and Guidelines

- DIN 4109 Sound proofing in building construction
- DIN 1988 Standard flushing
- DIN 18195 Sealing of built-in fittings
- DIN EN 1717 Drinking water protection



WALL INSTALLATION



Align and screw in



Connect up



Trim and affix seal



Tile



Flush in accordance with DIN 1988 using integrated flushing set – without opening the box



Trim to size – the inside of the box remains protected from dirt during the entire construction phase



Maximum ease of installation  
*Simple. Quick. Safe.*

FINAL INSTALLATION



Remove assembly pipe



Simply lift out flushing set



Install unit



Install trim set

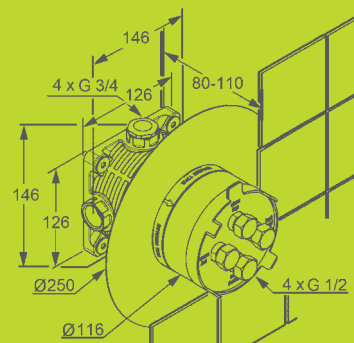


Affix rosette attachment



Ready!





**88011**  
KLUDI FLEXX.BOXX, concealed unit DN 20  
concealed construction set without trim set,  
without unit, concealed installation with one-piece  
Elastomere coating, with construction protective cap,  
with additional seal, with flushing set, platform made  
from DZR brass P-IX 19310/ICB

ACCESSORIES



**7300600-00**  
Concealed extension for trim sets,  
suitable for 88011 KLUDI FLEXX.BOXX;  
an extension kit for all applications



**6115000-00**  
Flushing hose  
G ½ x G ½ x 600 mm  
hot water resistant



**7458000-00**  
Adaptor for wrong installed  
function part for KLUDI FLEXX.BOXX  
single lever variants



**7400100-00**  
Adaptor for wrong installed  
function part for KLUDI FLEXX.BOXX  
thermostatic variants

Series  
availability

JOOP!

KLUDI NEW WAVES

KLUDI AMBA

KLUDI E2

KLUDI BALANCE

KLUDI Q-BEO

KLUDI MX

KLUDI O-CEAN

KLUDI BOZZ

KLUDI ZENTA

KLUDI OBJEKTA

KLUDI TERCIO

KLUDI PROVITA

KLUDI PUSH

KLUDI PUSH



Unit single lever mixer



55650..75



576500575



536500575



496500575



52650..75



506500575



336500562



387500575



386500576



38650..75



326500575



386510575



336500500



55655..75



576550575



536550575



496550575



52655..75



506550575



336550562



387550575



386550576



38655..75



326550575



336550500



Unit thermostatic mixer



558300505



578300530



538300575



498300575



52830..75



508300542



358300538



388300545



388300545



358300538



386560575



558350505



578350530



538350575



498350575



52835..75



508350542



358350538



388350545



388350545



358350538



Unit single lever mixer  
protected against backflow



536570575



52657..75



336570562



387570575



386570576



386570575



326570575



Unit thermostatic mixer



537290575



497290575



Unit thermostatic mixer  
for one outlet



388010538



388020538



Unit thermostatic mixer  
for two outlets



388110538



388120538

